

1/4-14 X 1 1/4" HWH TEK2  
FASTENERS (2 PER CONNECTION)

#10-16 X 1" TEK2 PANCAKE  
HEAD FASTENERS (@2'-0" O.C.)

OUTSIDE CLOSURE  
(SET IN 1" ROLL TAPE  
SEALANT)

MT-13: 1" ZEE CLOSURE

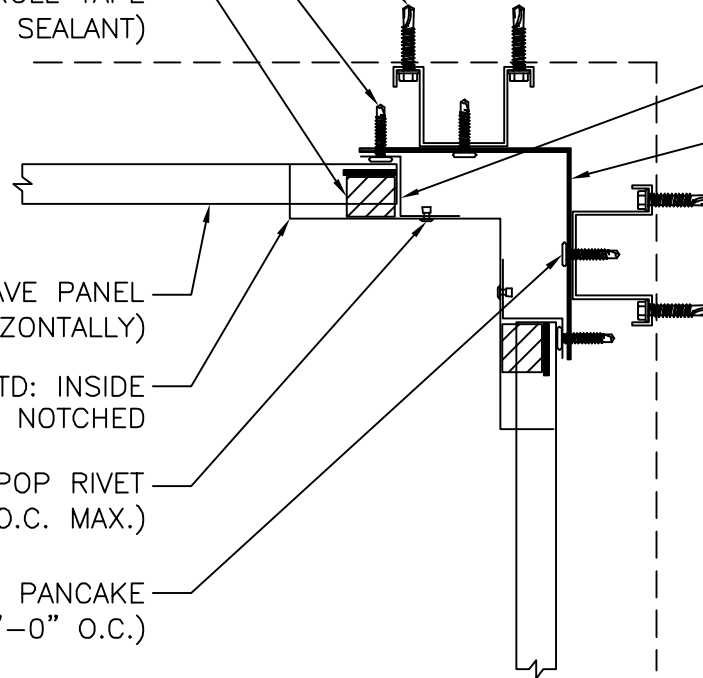
4" X 4" X 16GA.  
ANGLE

WAVE PANEL  
(INSTALLED HORIZONTALLY)

MT-WAV-CRN-IS-STD: INSIDE  
CORNER TRIM - NOTCHED

43D POP RIVET  
(@1'-8" O.C. MAX.)

#10-16 X 1" TEK2 PANCAKE  
HEAD FASTENER (@1'-0" O.C.)



## INSIDE CORNER (ALT.) DETAIL

ISSUE/REVISION DATE:

06/08/2020



ROOF PANEL: WAVE

SUBSTRATE: LAT SECTION

SCALE: N.T.S.